

Solenoids

Series 147

High Force & Stroke

Open Frame Solenoid



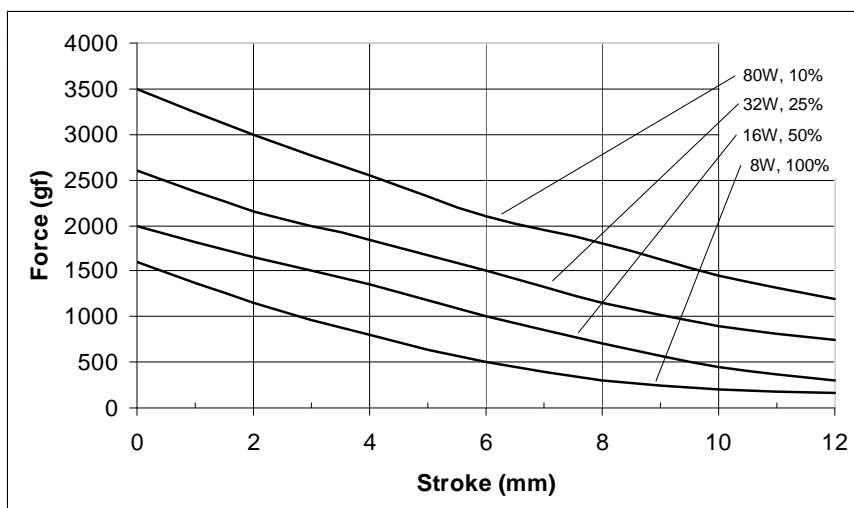
GENERAL DESCRIPTION

- High Force & Stroke
- Pull or Push available
- For Heavy-Duty Applications
- DC Powered

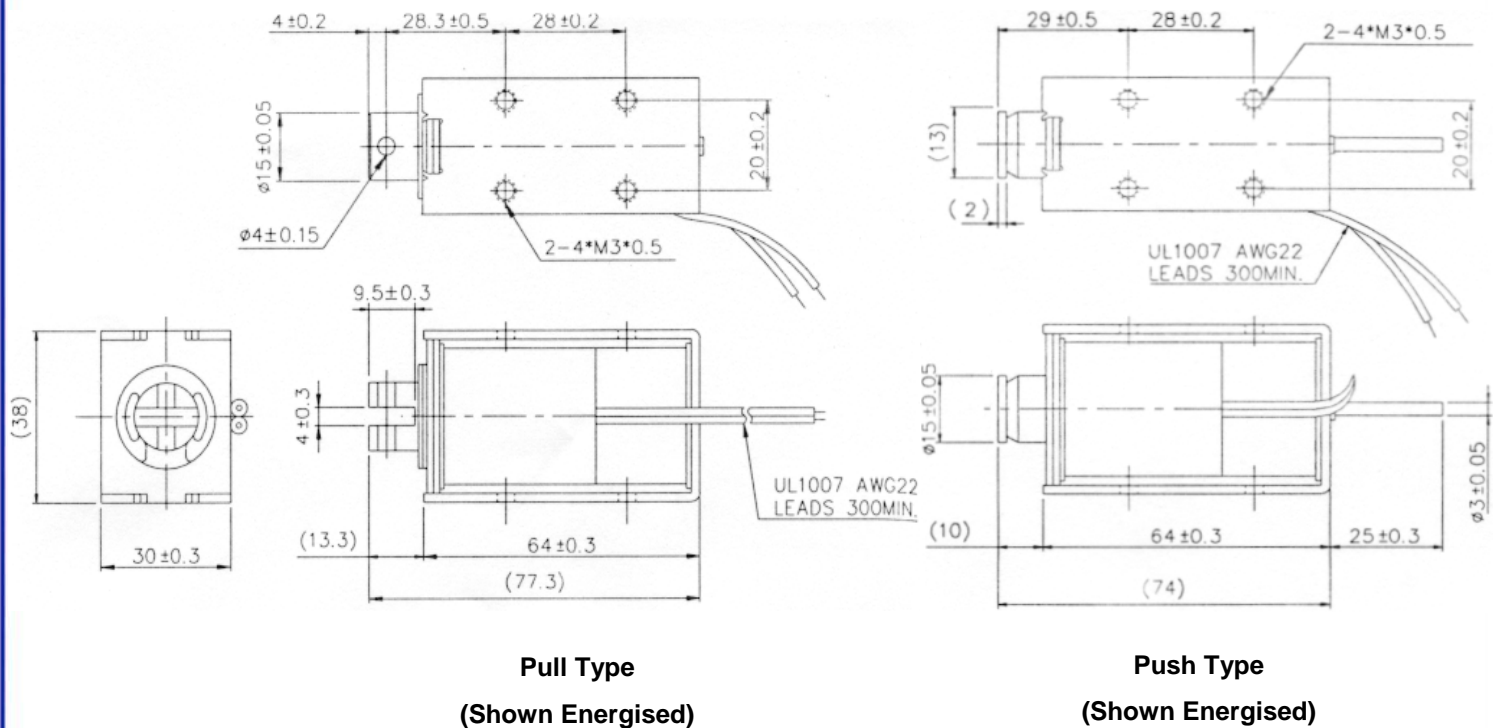
PERFORMANCE

ITEM	SPECIFICATION
ELECTRICAL Closed power (continuous rating)	8W
Dielectric strength	1000V RMS 50Hz, 1 minute
Insulation	All coils tested to frame at 1000V RMS 50Hz
MECHANICAL Weight	Total: 205g. approx. Plunger: 71g
Ambient temperature	The information given on this page is based on a room temperature of 20°C allowing for a nominal 75°C temperature rise in the coil.
Force stroke curve	This force stroke curve shows average performance only. In addition to normal manufacturing tolerances, deviations can be expected at some voltages due to the coil winding tolerances.

FORCE AND STROKE CURVES



DIMENSIONS (mm)



CODING

147-156-410-XXX	Pull Type
147-156-420-XXX	Push Type

Type No.	Resistance (Ohms) $\pm 10\%$ @ 20°C	Voltage dc			
		Continuous 100%	50% Or less	25% Or less	10% Or less
147-156-410-620	18	12	17	24	38
147-156-410-720	72	24	34	48	76
147-156-420-620	18	12	17	24	38
147-156-420-720	72	24	34	48	76
Maximum 'on' time (seconds)		∞	140	50	9
Watts at 20 °C		8	16	32	80

$$\text{Duty Cycle (\%)} = \frac{\text{'ON' time}}{\text{'ON' time} + \text{'OFF' time}} \times 100$$



Dialight BLP products are designed, manufactured and tested to quality standards approved by BSI. Dialight BLP reserve the right to change without prior notice the information contained in this leaflet.

Dialight BLP Ltd, Exning Road, Newmarket, Suffolk CB8 0AX, England
 Tel: +44 (0)1638 665161 Fax: +44 (0)1638 660718
 email: sales@blpcomp.com
 website: www.blpcomp.com
 A subsidiary of Dialight PLC