

# SERIES 59

## MAINTAINED ACTION



## SERIES 59 MAINTAINED

### FEATURES

- Maintained Mode
- Panel sealed to IP67
- Non – rotating button
- Moulded PBT
- Wide temperature range of -40°C to + 105°C
- Gold contacts
- Solder terminals

### NON-STANDARD OPTIONS

- PCB terminals
- Surface or sublimation legend printing
- Tailored to suit your requirements

The 59 Maintained switches are extremely hard wearing. Normally open contacts, manufactured from PBT. Front of panel mounting, panel sealed to IP67 suitable for use in most applications.

Connections are made via the solder terminals at the rear of the switch. Similar to the standard 59 series switches from front of panel.

### TECHNICAL

#### MECHANICAL

Operating force	3N (typical)
Panel thickness	1.5 mm to 3 mm
Body Diameter	M14 thread
Panel cut out	(see Fig.2)
Life (min)	100,000 cycles
Travel	3.1 mm Nominal

#### ELECTRICAL

Dielectric strength	1KV AC 1 minute
Insulation resistance	1GΩ @500V d.c
Contact resistance (initial)	50mΩ
Electrical load	Current rating, typical @ 32 VAC resistive: 400mA @ 50 VDC resistive: 100mA @ 125 VAC resistive: 125mA
Life	100,000 cycles (max load) @ 70°C

#### ENVIRONMENTAL AND PHYSICAL

Ingress protection	IP67 (Panel Sealing)
Operating temperature range	-40°C to + 105°C
Body material	PBT
Actuator material	PBT
Contact material	Gold plated nickel
Terminal material	Gold plated brass

### APPLICATIONS

- Robust industrial requirements ■ Process control
- Railway carriage equipment ■ Material handling
- Crane gantry equipment ■ Earth moving equipment
- Instrumentation ■ Communications ■ Military environments

## ORDERING

### BODY STYLE

Round - 8

### TERMINALS

Solder - 1

### BUTTON COLOUR

Black	1	Yellow	5
Red	2	Blue	6
Green	3	Orange	7
White	4		

### PANEL MOUNTING AND CONSTRUCTION INFORMATION

The 59 Maintained mounts from the front into a double 'D' panel cut-out, (see Fig.2). Panel sealing is achieved by means of a sealing washer which is fitted to the switch body before it is inserted into the panel hole. The switch is then held in place by a lock-nut screwed on from the rear. A tightening torque of 0,55Nm - 0,65Nm is required to achieve front of panel sealing.

### CIRCUIT FORM



## SERIES 59 MAINTAINED

### PANEL MOUNTING DIAGRAMS

Button: PBT.  
Colours Various

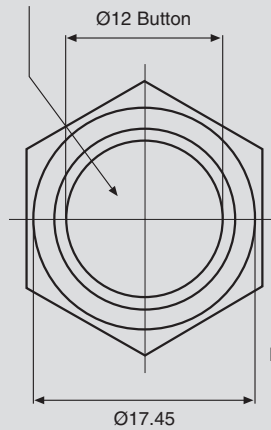
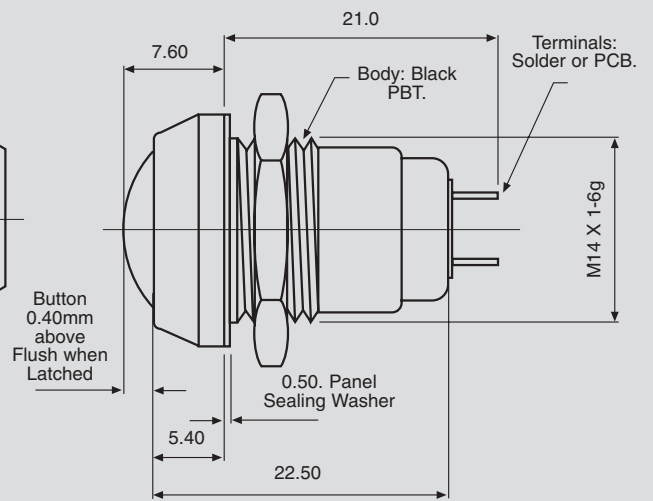


Fig.1



### SUGGESTED PANEL CUT-OUT

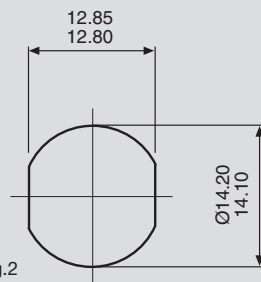
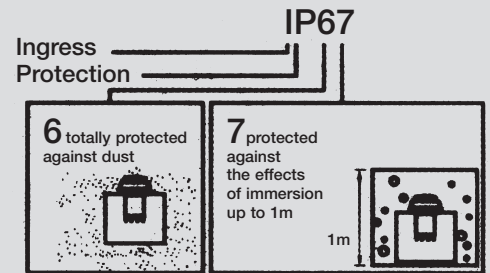


Fig.2

### INGRESS PROTECTION KEY



### FURTHER INFORMATION

#### ITW Switches

A Division of ITW Limited  
Norway Road, Portsmouth,  
England PO3 5HT

Tel: 00 44 (0) 2392 656200

Fax: 00 44 (0) 2392 666352

Due to our policy of continuous product development, ITW Switches retain the right to change the specification at any time without prior notice. Designed & printed in the UK.

e-mail:

[info@itwswitches.co.uk](mailto:info@itwswitches.co.uk)

website:

[www.itwswitches.co.uk](http://www.itwswitches.co.uk)

**ITW Switches**  
**ITW Switchpanels**